

TRIBAL NATIONS LAYER

The ODMAP Tribal Nations Layer will allow users to filter/view suspected overdose data and analytics based on current federally-recognized reservations. This filter works like state or county filtering: choosing a reservation updates the map to show statistics and analytics specific to that selection.

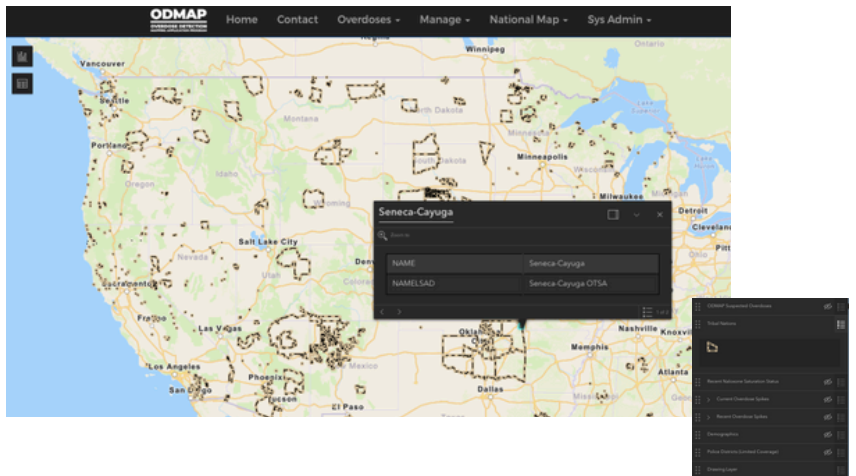
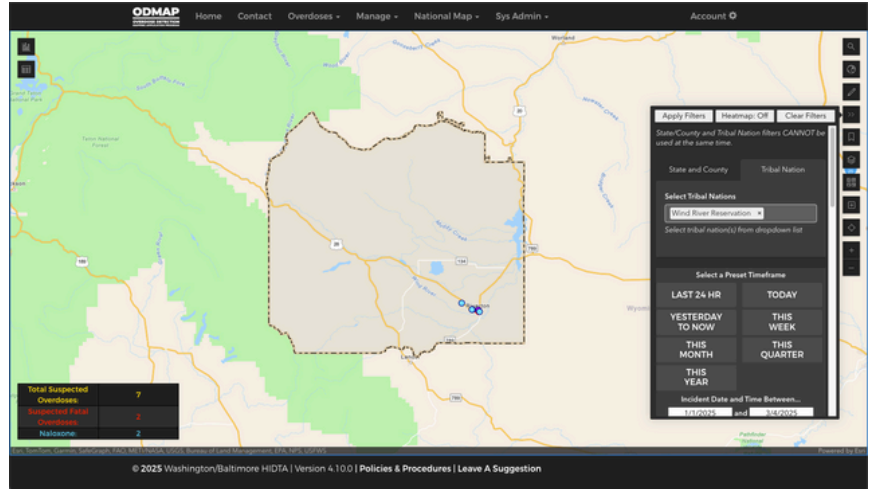
The example on the right demonstrates both the filter and layer features combined, in order to highlight overdoses that have occurred within the Wind River Reservation, in Wyoming (the data does not represent actual overdose events, they have been entered for demonstration purposes only by the W/B HIDTA).

You can query multiple reservations at the same time and also add data from different layers.

By enabling the Tribal Nations Layer on the National Map, users can view reservation boundaries, which are represented by yellow, dotted, highlighted areas.

When clicking on a reservation boundary on the National Map, a pop-up window will appear giving information such as the name of the Nation. You can view both Tribal Nation areas and suspected overdoses on the National Map together.

The current Tribal Nations Layer represents phase one of a multi-phase project. Spike alerts are currently unavailable for Tribal Nations and will be a priority in the next phase. However, users can use the custom shape feature to create a custom spike alert.



[Click here to learn more about the different tribal nations.](#)